

INSULATED STAINLESS STEEL STACKED HOT CABINETS H-339-214

(FOR 18" X 26" PANS)

FEATURES AND BENEFITS:

- Stacked heated cabinets have two separate compartments and controls for flexibility in hot holding needs.
- Fully insulated cabinets keep prepared foods at serving temperatures.
- Powerful, yet efficient, 900 Watt heating systems maintain the right temperature to properly hold products. Heats up to 200°F. (93°C.).
- One cord powers both cabinets, eliminating the need for extra outlets.
- Internal frame in body and doors maintains structural rigidity.
- Safety-conscious anti-microbial latches protect against spreading germs.
- 304 stainless steel construction throughout for ease of cleaning. One piece extended base protects cabinet body.
- Insulated field reversible doors for flexibility. Standard with right hand hinging; left hand hinging available upon request.
- Magnetic latches for "easy open"; twist-lock catch secures doors during transport. Latches and hinges mounted inboard.
- Removable wire pan supports for easy cleaning hold 18" x 26" pans and 12" x 20" pans on 2-3/4" centers.
- Pan stops on inside of doors and back allow for proper air flow.
- Convenient lift handles fold flat against sides of cabinet.
- Heavy duty 5" swivel casters, two with brakes. Provides mobility when fully loaded.



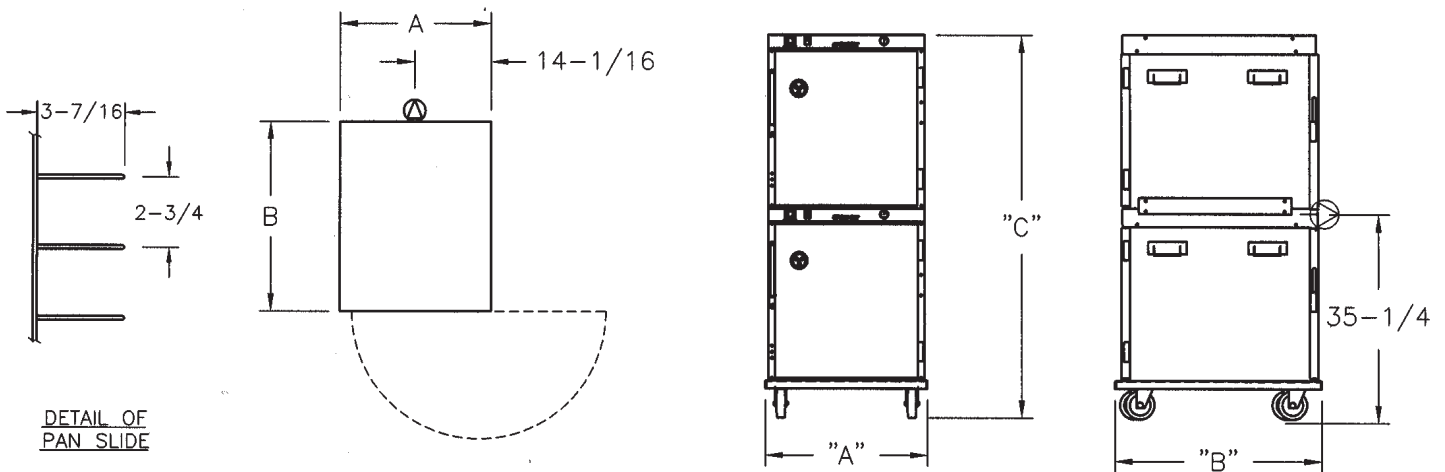
H-339-214



ACCESSORIES and OPTIONS (Available at extra cost):

- Key Lock Handle
- Corner Bumpers
- Perimeter Bumper
- Various Caster Options
- Digital Thermometer
- 240 Volt Service

See page B-20 for accessory details.



CRES COR MODEL NO.	PAN			DIM "A"	DIM "B"	DIM "C"	INSIDE DIMENSIONS			WEIGHT ACT.	
	CAP	SIZE		WIDTH	DEPTH	HEIGHT	WIDTH	DEPTH	HEIGHT		
H-339-214	8	18 x 26	IN	23-7/8	32-1/4	67-1/8	18-3/16	26-1/4	24-7/8	LBS	390
		460 x 660	MM	610	820	1705	465	670	635	KG	177
	8	12 x 20	IN								
		305 x 510	MM								

When ordering bumpers, add 2" to overall dimensions.

ALL CONSTRUCTION IS RIVETED, WELDED AND FINISHED. STACKED CABINETS ARE ASSEMBLED AND SHIPPED IN ONE CARTON.

CABINETS:

- Bodies: 22 ga. 304 stainless steel compartments; stacked on top of each other fastened together with tie plates, .063 extruded aluminum.
- Reinforcements: Internal framework of channels, 1 x 3/4 x .125.
- Insulation: Fiberglass, thermal conductivity (K factor) is .23 at 75°F. 1-1/2" in walls, 1" in doors, top and bottom.
- Pan stop channels: Mounted to inside rear of each compartment and door.
- Bail Handles (8): Four mounted each side; top & bottom.

BASE:

- One piece construction, .190 aluminum.
- Casters: 5" dia. swivel, modulus tires, 1-1/4" wide, load cap. 250 lbs. each, temp. range -45°/+180°F, Delrin bearings. Front casters equipped with brakes.

DOORS:

- Field reversible.
- Formed 22 ga. 304 stainless steel.
- Latches: Chrome plated zinc with composite handle, magnetic type; mounted inboard.
- Hinges: Heavy duty chrome plated zinc; mounted inboard.
- Gaskets: Perimeter type, silicone.
- Transport latches.
- Vents: Adjustable.

PAN SLIDES:

- Wire rack with .250 dia. wire vertically and .208 dia. wire horizontally. Nickel chrome plated steel spaced on 2-3/4" centers.

ELECTRICAL COMPARTMENTS:

- Control panels: Formed 22 ga. 304 stainless steel; black front.
- Thermostats: Electro-mechanical, room ambient to 200°F (93°C).
- Switches: Lighted ON/OFF rocker type.
- Power cord: Permanent, 6 ft., 12/3 ga. with straight plug; single cord powers both top and bottom cabinet.
- Heaters (3 each compartment): 300 Watts each.
- Thermometers.

POWER REQUIREMENTS:

- 1800 Watts, 120 Volts, 60 Hz., single phase, 15 Amps., 20 Amp. service.

SHORT FORM SPECIFICATIONS

Cres Cor Insulated Holding Cabinet Model H-339-214. Inner, outer and top liners of 22 ga., 304 stainless steel, reinforced with channel frame. Fiberglass insulation in walls 1-1/2"; door, top and bottom 1". Welded and finished .190 aluminum base. (6) 300 Watt inner wall heaters, 120 volts. Removable pan supports for (8) 18" x 26" pans or (8) 12" x 20" pans spaced on 2-3/4" centers. Four bail handles each side. 5" swivel modulus casters, Delrin bearings. Load capacity 250 lbs. each. 2 year parts warranty. Provide the following accessories: _____
 _____ . CSA-US, CSA-C, CSA to NSF4 listed. Energy Star Qualified



5925 Heisley Road • Mentor, OH 44060-1833
 Phone: 877/CRESCOR • Fax: 440/350-7267
 www.crescor.com

© Crescent Metal Products, Inc. 2008 All rights reserved.

In line with its policy to continually improve its products, CRES COR reserves the right to change materials and specifications without notice.