

## ROAST-N-HOLD™ GENTLE CONVECTION OVEN MODEL CO-151-H-189B (HALF SIZE)

### FEATURES AND BENEFITS:

- Fully insulated half size Roast-N-Hold gentle convection oven designed for flavorful results by slow roasting.
- Slow convected air system promotes natural browning for flavor and seals in natural juices. Slow roasting means 15% to 20% less shrinkage.
- Efficient 4700 Watt power unit allows for reheating of prepared meals or bulk items. Maximum temperature 350°F. (176.5°C.).
- Pre-setting automatic controls for roasting and holding cycles allows for unattended operation 24 hours a day.
- Roast and hold over 120 lbs. (54 kg.) of meat in just 6 sq. ft. of floor space.
- Non-venting oven, permitted by most local codes, provides easy, inexpensive installation.
- Self-contained power top lifts off for ease of maintenance; available to suit your power requirements.
- Stainless steel construction throughout for ease of cleaning.
- Smooth interior coved corners prevent food particle/grease buildup.
- Field reversible insulated door prevents temperature loss. Silicone door gasket for proper seal. High temperature ceramic magnetic latch for "easy open" and security during transport. Latch and hinges mounted inboard.
- Standard with right hand hinging; left hand hinging available upon request.
- Push/pull handle mounted on rear allows easy maneuvering.
- Channel pan slides securely hold 18" x 26" pans on 3" centers without tipping. Provides added strength. Supplied with three raised wire grids.
- Heavy duty 5" swivel casters, two with brakes. Provides mobility when fully loaded.
- Ovens can be stacked for flexibility.
- Free cooking manual and operation manual provided with the purchase of any Roast-N-Hold Oven.

### POWER UNIT OPTIONS:

- 4700 Watts, 208 Volts, 1 Phase, 60 Hz.
  - 4700 Watts, 240 Volts, 1 Phase, 60 Hz.
  - 4700 Watts, 208 Volts, 3 Phase, 60 Hz.
  - 4700 Watts, 240 Volts, 3 Phase, 60 Hz.
- Probe Power Unit Available at Extra Cost (see page E-6)



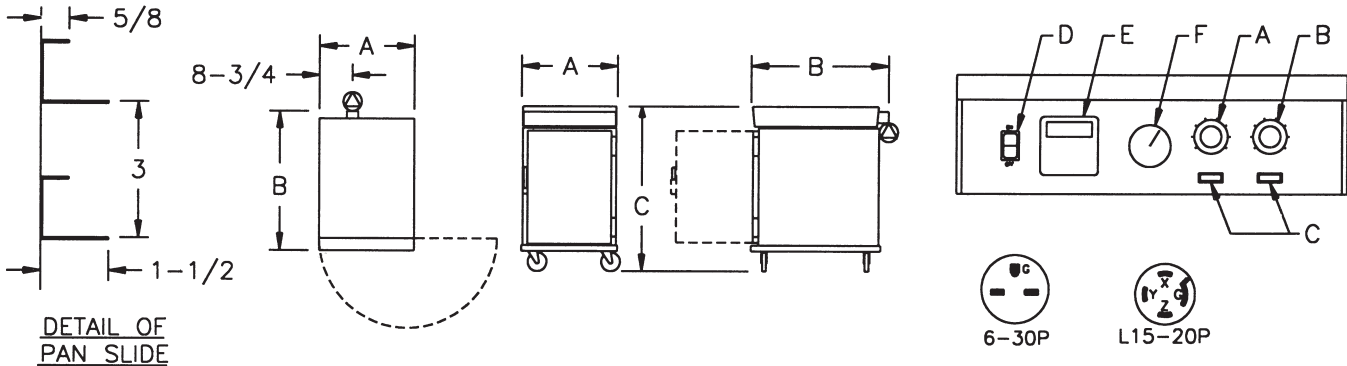
CO-151-H-189B



### ACCESSORIES and OPTIONS (Available at extra cost):

- Stacking Kit
- Security Panel for Controls
- Tempered Glass Door Window
- Key Lock Latch
- Extra Wire Grids
- Perimeter Bumper
- Corner Bumpers
- Floor Lock (for use with 5" casters)
- Various Caster Options
- 50 Cycle Service

See page E-10 for accessory details.



CRES COR MODEL NO.	PAN			DIM "A"	DIM "B"	DIM "C"	INSIDE DIMENSIONS				WEIGHT ACT.
	CAP	SIZE		WIDTH	DEPTH	HEIGHT	WIDTH	DEPTH	HEIGHT		
CO-151-H-189B	9	18 X 26	IN	25-3/8	37-3/4	43-3/4	18-1/4	26-1/2	28	LBS	296
		460 X 660	MM	645	960	1115	465	675	715	KG	134

ALL CONSTRUCTION IS RIVETED, WELDED AND FINISHED.

**CABINET:**

- Body: 22 ga. stainless steel.
- Reinforcement: Internal framework of 16 ga. stainless steel.
- Insulation: Fiberglass, thermal conductivity (K factor) is .23 at 75°F. 1-1/2" in back wall, doors, base; 2" in side walls.
- Air tunnel: 20 ga. stainless steel, lift-out type, mounted on rear wall.
- Work Top: 18 ga., stainless steel.

**BASE:**

- One piece construction, .125 aluminum.
- Casters: 5" dia., swivel, modulus tires, 1-1/4 wide, load cap. 250 lbs. each, temp. range -45/+180°F. Delrin bearings. Front casters equipped with brakes.

**DOOR:**

- Field reversible.
- Formed 22 ga. stainless steel.
- Latches: Chrome plated zinc with composite handle, ceramic magnetic type; mounted inboard.
- Hinges: Heavy duty chrome plated zinc, lift-off type; mounted inboard.
- Gasket: Perimeter type, silicone.
- Pan stop: Embossed.

**PAN SLIDES:**

- 18 ga. stainless steel channels on 3" centers.
- Grids (3): Nickel chrome plated steel, raised wire 17" x 25".

**POWER REQUIREMENTS AVAILABLE:**

- 4700 Watts, 208 Volts, 60 Hz., 1 phase, 24 Amps., 30 Amp. service.
- 4700 Watts, 240 Volts, 60 Hz., 1 phase, 20 Amps., 30 Amp. service.
- 4700 Watts, 208 Volts, 60 Hz., 3 phase, 13 Amps., 20 Amp. service.
- 4700 Watts, 240 Volts, 60 Hz., 3 phase, 12 Amps., 20 Amp. service

**POWER UNIT COMPONENTS: (refer to above drawing)**

- Body: Formed 20 ga. stainless steel with black control panel, recessed and tilted 7°.
- A) Thermostat (holding): Solid state, 140°F. (60°C.) to 250°F. (121°C.).
- B) Thermostat (cook/retherm): Solid state, 140°F. (60°C.) to 350°F. (176.5°C.).
- C) Pilot lights (2).
- D) Switch: Lighted ON-OFF rocker type.
- E) Timer: 24 hr. digital countdown; infinite memory retention.
- F) Thermometer.
- Power cord: Permanent, 6 ft., 10/3 ga. with right angle plug.
- Heaters (3): 1470 Watts each.
- Blower motors (3).
- Vent fans (2).
- Fuses (2): 3 Amp.

**INSTALLATION REQUIREMENTS:**

- Check local vent hood codes for mobile Roast-N-Hold ovens.

**SHORT FORM SPECIFICATIONS**

Cres Cor Roast-N-Hold Half Size Convection Oven Model CO-151-H-189B. Removable power unit 20 ga. stainless steel, recessed control panel. Cabinet and door 22 ga. stainless steel; stainless steel internal frame; coved corner interior. Fiberglass insulation in sides 2"; back, doors and base 1-1/2". High temperature magnetic latch. No-tip channel interior for 18" x 26" pans on 3" centers. One piece base .125 aluminum. 5" swivel modulus casters, Delrin bearings. Load capacity 250 lbs. each. 4700 Watts, \_\_\_\_\_ Volts, 60 Hz., \_\_\_\_\_ Phase. 2 year parts warranty. Provide the following accessories: \_\_\_\_\_ . UL Sanitation, UL, CUL listed.



5925 Heisley Road • Mentor, OH 44060-1833  
 Phone: 877/CRESCOR • Fax: 440/350-7267  
 www.crescor.com

© Crescent Metal Products, Inc. 2008 All rights reserved.

*In line with its policy to continually improve its products, CRES COR reserves the right to change materials and specifications without notice.*