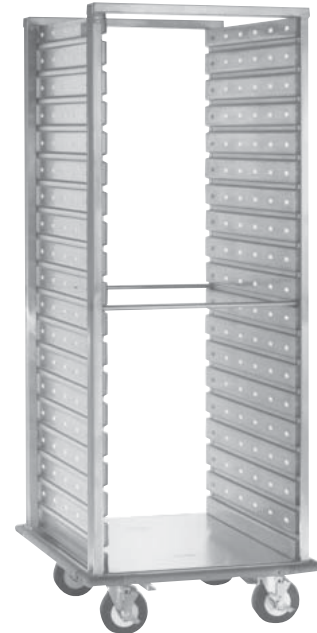


CORRUGATED SIDEWALL ROLL-IN REFRIGERATOR RACKS 208 SERIES (FOR 12" X 20" PANS)

FEATURES AND BENEFITS:

- Durable rack specifically designed to fit roll-in or pass through refrigerators, freezers, and warming cabinets; eliminates unnecessary product handling while maintaining proper temperature levels. Holds 12" x 20" pans.
- Fully welded framework of structural aluminum extrusions for rigidity and durability.
- Stainless steel sidewalls resist pan damage.
- Perforated corrugations on 3" centers allow for air circulation.
- Inboard heavy duty 5" swivel casters, two with brakes. Wheel placement permits easy "in-and-out" of roll-ins.
- Two styles available; Custom (C) or Deluxe (D). Deluxe includes perimeter bumper and enclosed base.
- Verify height of cabinet door opening before ordering.



208-1240-D

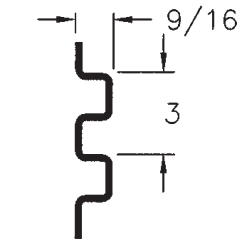


ACCESSORIES and OPTIONS (Available at extra cost):

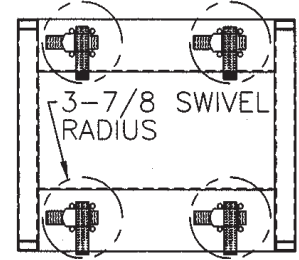
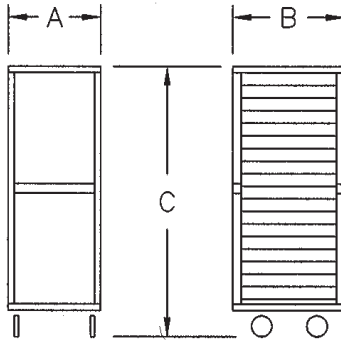
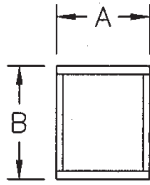
- Pan Stop
- Corner Bumpers
- Vertical Bumpers
- Various Caster Options

See page G-36 for accessory details.

208 Roll-In Series (12" x 20" pans)



DETAIL OF
PAN SLIDE



INBOARD CASTER PLACEMENT

CUSTOM ("C")

CRES COR MODEL NO.	PAN			DIM "A"	DIM "B"	DIM "C"	INSIDE DIMENSIONS				WEIGHT ACT.
	CAP	SIZE		WIDTH	DEPTH	HEIGHT	WIDTH	DEPTH	HEIGHT		
208-1240-C	38	12 x 20 x 2-1/2	IN	23-11/16	25-1/8	69	21-1/16	24-3/8	60-1/2	LBS	80
		305 x 510 x 635	MM	605	640	1755	535	620	1540	KG	36

DELUXE ("D")

CRES COR MODEL NO.	PAN			DIM "A"	DIM "B"	DIM "C"	INSIDE DIMENSIONS				WEIGHT ACT.
	CAP	SIZE		WIDTH	DEPTH	HEIGHT	WIDTH	DEPTH	HEIGHT		
208-1240-D	38	12 x 20 x 2-1/2	IN	25-9/16	27	69	21-1/16	24-3/8	60-1/2	LBS	85
		305 x 510 x 635	MM	650	690	1755	535	620	1540	KG	39

ALL CONSTRUCTION IS RIVETED, WELDED AND FINISHED.

RACK:

- Posts: Extruded aluminum channels, 1-1/16 x 2 x .125.
- Top and bottom: Extruded aluminum channels, 1-1/16 x 2-3/8 x .188; welded to posts.
- Tie rods (2): 5/16 dia. steel rods enclosed in aluminum tubing; fastened to posts.
- Sides: 22 ga. 304 stainless steel perforated corrugations riveted to posts.
- Bolsters: Formed .190 aluminum; welded to posts, casters attached.
- Casters: 5" dia., swivel, modulus tires, 1-1/4 wide, load cap. 250 lbs. each, temp. range -45°/+180°F. Delrin bearings. Two casters equipped with brakes.

DELUXE ("D") MODELS:

- Base plate: One piece .063 aluminum.
- Bumper: 1" wide gray rubber, perimeter type.

PAN SLIDES:

- Corrugations act as pan slides on 3" centers.

SHORT FORM SPECIFICATIONS

Cres Cor Roll-In Refrigerator Rack Model 208-1240- (C) or (D). Frame of extruded aluminum welded construction. Tie rods (2) applied at front and rear. 22 ga. 304 stainless steel no-tip corrugated sides for (38) 12" x 20" pans on 3" centers. Inboard 5" swivel modulus casters, Delrin bearings. Load capacity 250 lbs. each, temperature -45° to +180°F.

- Custom Model (C)
- Deluxe Model (D) has .063 aluminum base plate; perimeter bumper.

Provide the following accessories:

_____. NSF listed. 2 year parts warranty.



5925 Heisley Road • Mentor, OH 44060-1833
Phone: 877/CRESCOR • Fax: 440/350-7267
www.crescor.com

© Crescent Metal Products, Inc. 2006 All rights reserved.

In line with its policy to continually improve its products, CRES COR reserves the right to change materials and specifications without notice.

Litho in U.S.A.